

CCRK Antibody (N-term)
Purified Rabbit Polyclonal Antibody (Pab)
Catalog # AP7119a**Specification**

CCRK Antibody (N-term) - Product Information

Application	WB,E
Primary Accession	Q8IZL9
Reactivity	Human
Host	Rabbit
Clonality	Polyclonal
Isotype	Rabbit IgG
Calculated MW	38695
Antigen Region	16-45

CCRK Antibody (N-term) - Additional Information**Gene ID** 23552**Other Names**

Cyclin-dependent kinase 20, CDK-activating kinase p42, CAK-kinase p42, Cell cycle-related kinase, Cell division protein kinase 20, Cyclin-dependent protein kinase H, Cyclin-kinase-activating kinase p42, CDK20, CCRK, CDCH

Target/Specificity

This CCRK antibody is generated from rabbits immunized with a KLH conjugated synthetic peptide between 16-45 amino acids from the N-terminal region of human CCRK.

Dilution

WB~~1:1000

E~~Use at an assay dependent concentration.

Format

Purified polyclonal antibody supplied in PBS with 0.09% (W/V) sodium azide. This antibody is prepared by Saturated Ammonium Sulfate (SAS) precipitation followed by dialysis against PBS.

Storage

Maintain refrigerated at 2-8°C for up to 2 weeks. For long term storage store at -20°C in small aliquots to prevent freeze-thaw cycles.

Precautions

CCRK Antibody (N-term) is for research use only and not for use in diagnostic or therapeutic procedures.

CCRK Antibody (N-term) - Protein Information**Name** CDK20

Synonyms CCRK, CDCH

Function Required for high-level Shh responses in the developing neural tube. Together with TBC1D32, controls the structure of the primary cilium by coordinating assembly of the ciliary membrane and axoneme, allowing GLI2 to be properly activated in response to SHH signaling (By similarity). Involved in cell growth. Activates CDK2, a kinase involved in the control of the cell cycle, by phosphorylating residue 'Thr-160'.

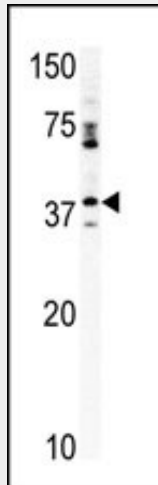
Cellular Location

Nucleus. Cytoplasm. Cell projection, cilium

CCRK Antibody (N-term) - Protocols

Provided below are standard protocols that you may find useful for product applications.

- [Western Blot](#)
- [Blocking Peptides](#)
- [Dot Blot](#)
- [Immunohistochemistry](#)
- [Immunofluorescence](#)
- [Immunoprecipitation](#)
- [Flow Cytometry](#)
- [Cell Culture](#)

CCRK Antibody (N-term) - Images

Western blot analysis of anti-CCRK Pab (Cat. #AP7119a) in mouse kidney tissue lysate (35ug/lane). CCRK(arrow) was detected using the purified Pab.

CCRK Antibody (N-term) - Background

CCRK contains a kinase domain most closely related to the cyclin-dependent protein kinases. This protein is involved in cell growth and activates CDK2, a kinase involved in the control of the cell cycle, by phosphorylating residue Thr-160.

CCRK Antibody (N-term) - References

Fujii, H., et al., Biochem. Biophys. Res. Commun. 322(3):1052-1058 (2004).
Liu, Y., et al., J. Biol. Chem. 279(6):4507-4514 (2004).